

Immingham East Ro-Ro Navigation Risk Assessment

Location Overview

Legend

- Order Limit
- Proposed Marine Infrastructure
- Typical IERRT RoRo Design Vessel
- Existing Operational Berth



Notes

Chart from MarineFind (3496-3);
Order Limit and Proposed Marine Infrastructure
digitised from General Arrangement Plan (PINS
Ref: TR030007)

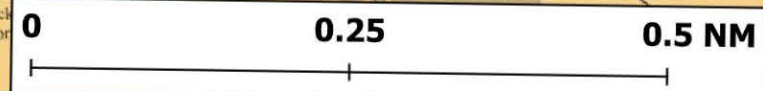
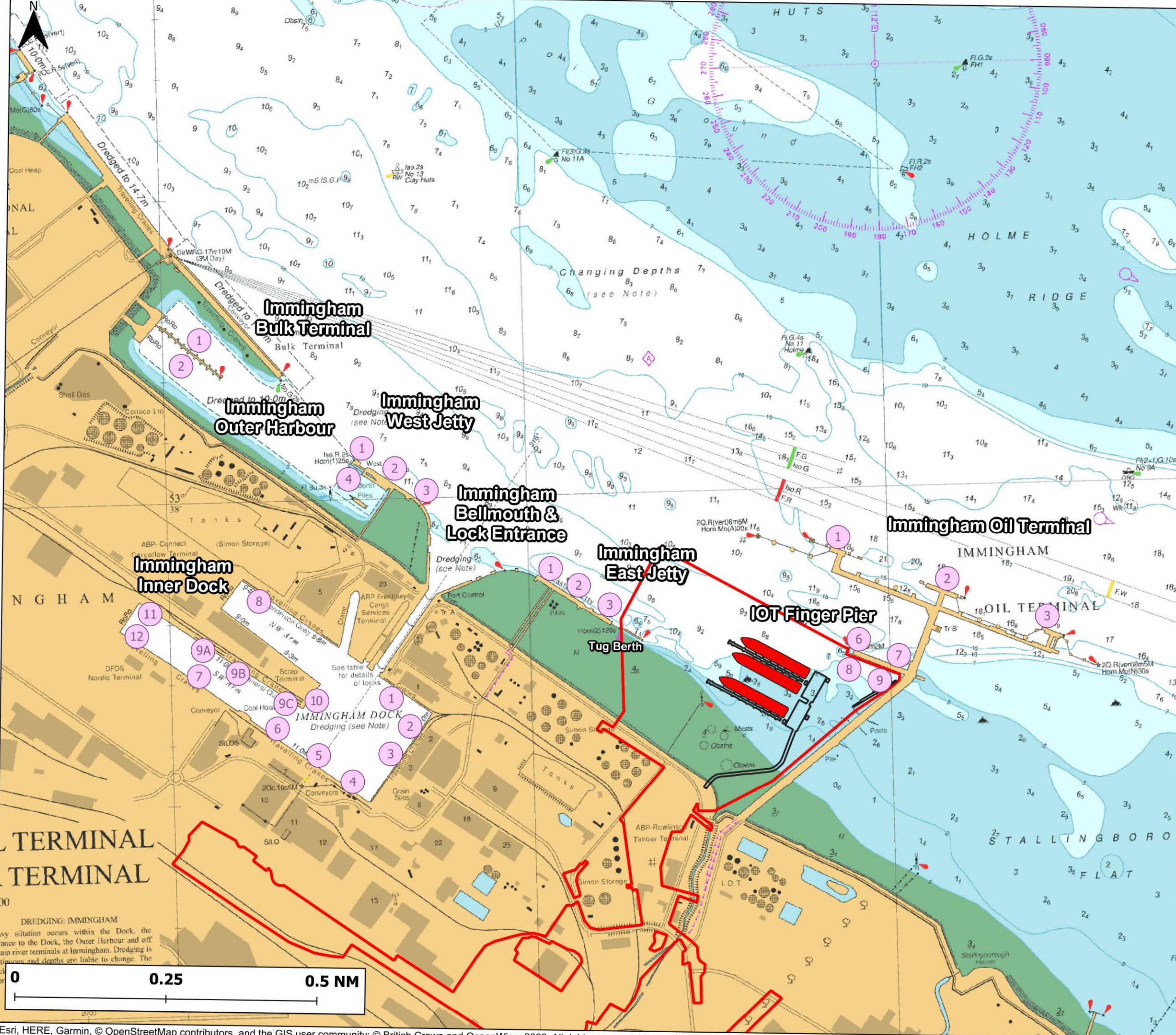
Client Immingham Oil Terminal

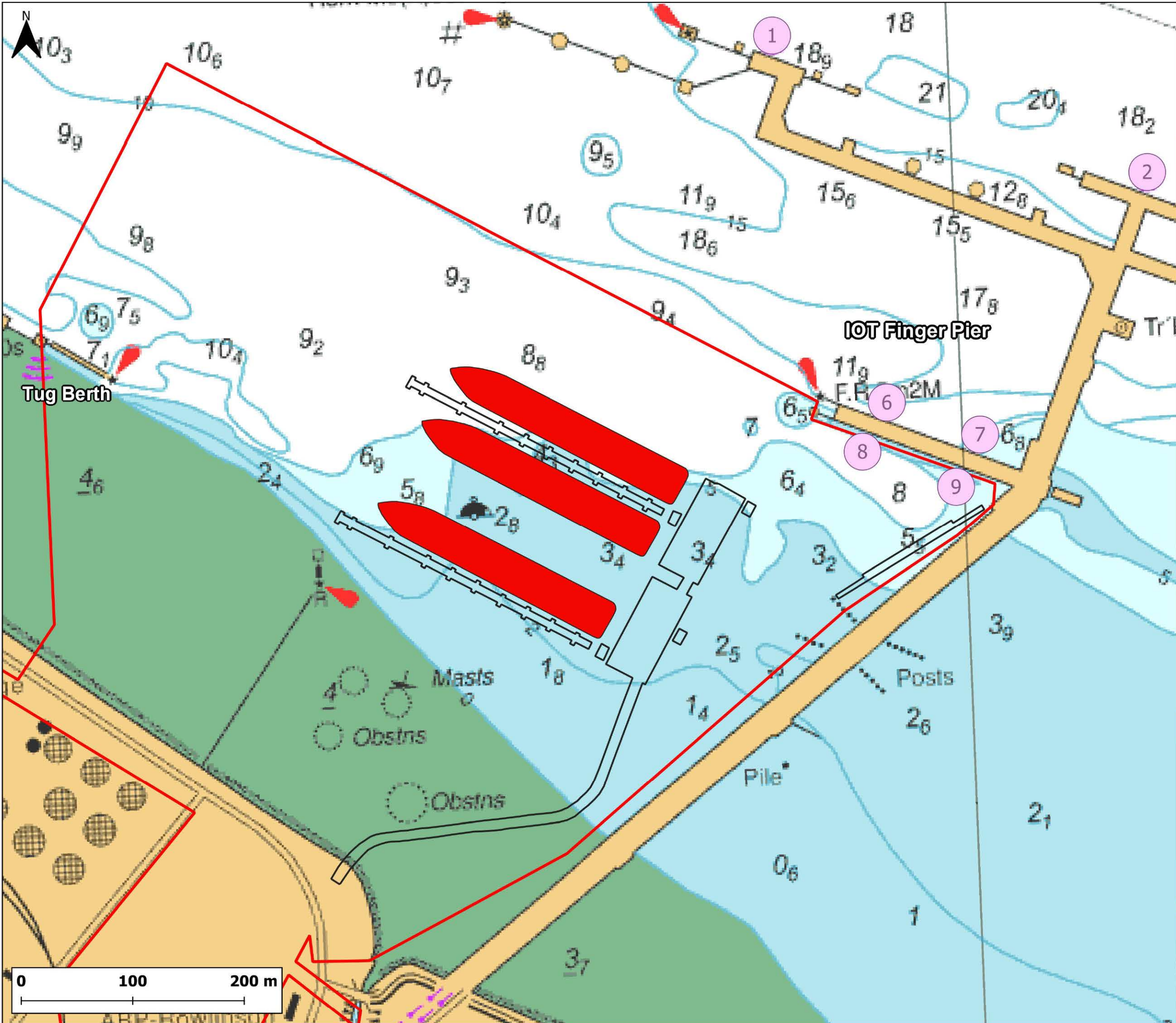
NOT FOR NAVIGATION

Issue Details

Drawn:RM
Checked:AR
Approved:ER
Date: 9/8/2023
ID: NASH0243
EPSG:32630

2-4 Canute
Road
NASH
MARITIME
Southampton
SO14 3FH
info@nashmaritime.com





Immingham East Ro-Ro Navigation Risk Assessment

Overview of Project Infrastructure Area

Legend

- Order Limit
- Proposed Marine Infrastructure
- Typical IERRT RoRo Design Vessel
- Existing Operational Berth



Notes

Chart from MarineFind (3496-3);
 Order Limit and Proposed Marine Infrastructure digitised from General Arrangement Plan (PINS Ref: TR030007)

Client Immingham Oil Terminal

NOT FOR NAVIGATION

Issue Details

Drawn:RM
 Checked:AR
 Approved:ER
 Date: 9/8/2023
 ID: NASH0243
 EPSG:32630

NASH MARITIME
 2-4 Canute Road
 Southampton
 SO14 3FH
 info@nashmaritime.com